



Flat 3, 57, St Michaels Street, Shrewsbury, SY1 2HA
£800 Per Month



Flat 3, 57, St Michaels Street, Shrewsbury, SY1 2HA

£800 Per Month

VIRTUAL TOUR AVAILABLE - Refurbished FURNISHED one bedroom second floor flat forming part of this recent development of 3 properties located within an attractive Grade II listed building a short walk to the north of Shrewsbury town centre and offering easy access to the railway station. Includes off road parking.

Available: Immediately

Description

Communal Entrance, stairs to second floor, entrance lobby, double bedroom including ensuite shower room, new kitchen area including washing machine, oven, hob and integrated fridge, living room area with views over park. Gas central heating, secondary glazing. Off parking in car park to left of building. EPC C



Furnished

Council Tax Band: A

Available: 2nd January 2026

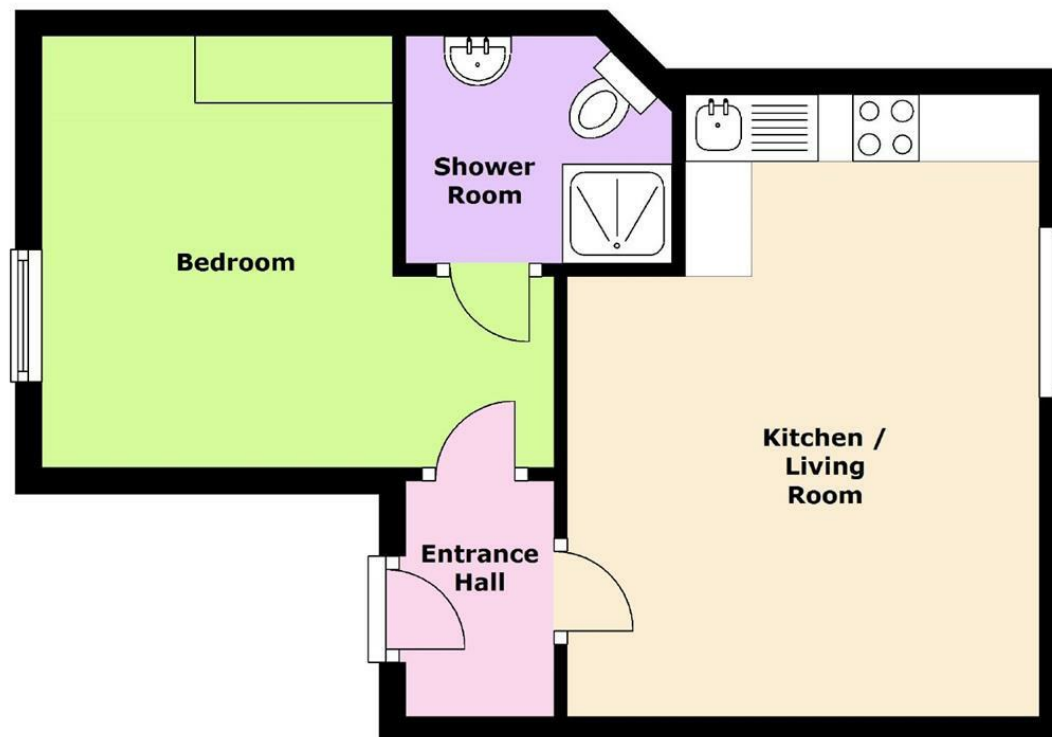
EPC: C



Floor Plans

Second Floor

Approx. 32.0 sq. metres (344.3 sq. feet)



Total area: approx. 32.0 sq. metres (344.3 sq. feet)

We accept no responsibility for any mistake or inaccuracy contained within the floorplan. The floorplan is provided as a guide only and should be taken as an illustration only. The measurements, contents and positioning are approximations only and provided as a guidance tool and not an exact replication of the property.

Plan produced using PlanUp.

These particulars, whilst believed to be accurate are set out as a general outline only for guidance and do not constitute any part of an offer or contract. Intending purchasers should not rely on them as statements of representation of fact, but must satisfy themselves by inspection or otherwise as to their accuracy. No person in this firm's employment has the authority to make or give any representation or warranty in respect of the property.